




Before operation: setting the current time

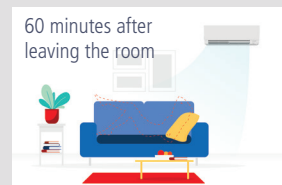
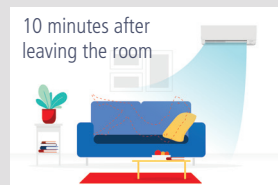
1. Press the **CLOCK** button 
2. Press the **TIME** button to set the time 
3. Press the **DAY** button to set the day
4. Press the **CLOCK** button again

3D i-see Sensor®

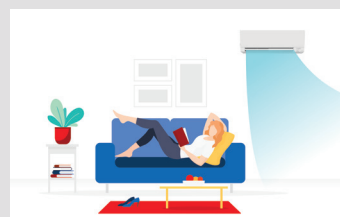
 **Sensor:** The sensor detects the room temperature.



 **Absence Detection:** When no one is in the room, the unit automatically switches to Energy-saving mode.



 **Indirect/Direct:** Press  to activate INDIRECT/DIRECT mode. This mode is only available when the i-see control mode is effective.



The **3D i-see Sensor** detects the location of occupants in the room. Direct mode aims airflow toward individuals in the space while Indirect mode diverts air away from room occupants.

NOTE: In the case of systems with multiple units (multi-systems), it is not possible to set different operation modes for each unit. In some cases, it may not be possible to use certain functions.



mitsubishicomfort.com

MITSUBISHI ELECTRIC
TRANE HVAC US

© 2020 Mitsubishi Electric Trane HVAC US LLC. All rights reserved. Mitsubishi Electric, Lossnay, and the three-diamond logo are trademarks of Mitsubishi Electric Corporation. CITY MULTI, kumo cloud, kumo station and H2i are registered trademarks of Mitsubishi Electric US, Inc. Trane and American Standard are registered trademarks of Trane Technologies plc. All other product names mentioned herein are trademarks or registered trademarks of their respective owners.

ENERGY STAR and the ENERGY STAR mark are registered trademarks owned by the United States Environmental Protection Agency.

Use of the AHRI Certified® mark indicates a manufacturer's participation in the certification program. For verification of certification for individual products, go to www.ahridirectory.org.

Specifications shown in this brochure are subject to change without notice. See complete warranty for terms, conditions and limitations. A copy is available from Mitsubishi Electric Trane HVAC US LLC.

Printed in the USA

ME_CT_1461_2-21

Remote Control User Guide

MSZ-FS Model



Compatible with Mitsubishi Electric FS and FH models



Selecting operation modes

1. Press to start operation
2. Press to select operation mode. Each press changes mode in the following order:
 - AUTO → COOL → DRY → HEAT → FAN
3. Press to set the temperature. Each press raises or lowers the temperature by 1°

Convenient one-touch functions

Press these buttons to toggle these functions on/off.

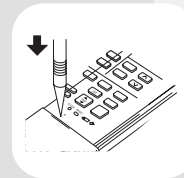
- EconoCool Mode**
 A swing pattern is used for airflow to create an enhanced cooling sensation. This allows the temperature to be set 2° higher without any loss of comfort.
- Powerful Mode**
 Air conditioner operates at maximum capacity for 15 minutes.
- Smart Set**
 Assign your favorite temperature set point to the Smart Set button. Then recall the setting on demand with the simple push of the Smart Set button. Pressing it again will return the temperature to the previous set point.
- In normal heating mode, the lowest possible temperature setting is 61° F, but using Smart Set, this value can be set as low as 50° F.

Natural Flow

- Natural Flow**
 As time passes, airflow will become more like natural wind. The continuous gentle breeze provides enhanced comfort for occupants.
- Press this button to toggle the function on/off.

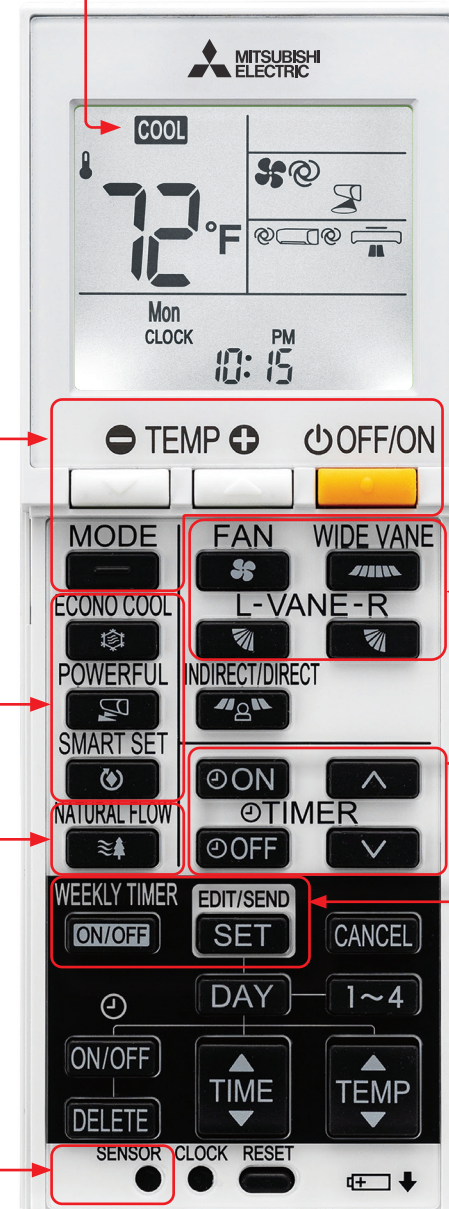
3D i-see Sensor® operation¹

1. Gently press using a thin instrument during COOL, DRY, HEAT and AUTO mode to activate i-see control mode.
 - This symbol appears on the operation display. The default setting is "active"
2. Press again to activate Absence Detection.
 - This symbol appears on the operation display
3. Press again to release i-see control mode.



¹See back panel for more information on 3D i-see Sensor® operation.

AUTO COOL DRY HEAT FAN



Fan speed & air flow direction adjustment

- FAN**
 Press to select fan speed. Each press changes fan speed in the following order:
- (AUTO) (Silent) (Low) (Med.) (High) (Super High)
- Wide Vane**
 Press to select horizontal airflow direction. Each press changes airflow direction in the following order:
- (SWING)
- L-VANE-R**
 Press to select airflow direction. Each press changes airflow direction in the following order:
- (AUTO) (1) (2) (3) (4) (5) (SWING)

Timer operation

- On and Off Timer**
- Press or during operation to set the timer.²
- (ON timer) : The unit turns ON at the set time.
- (OFF timer) : The unit turns OFF at the set time.
- Press (Increase) and (Decrease)³ to set the time of timer.⁴
- Press or again to cancel timer.
- ² If ON or OFF blinks, make sure that the current time and day are set correctly.
³ Each press increases or decreases the set time by 10 minutes.
⁴ Set the timer while ON or OFF is blinking.

- Weekly Timer**
1. Press to enter the weekly timer setting mode.
 2. Press and to select setting day and number.
 3. Press and to set ON/OFF, time, and temperature.
 4. Press to complete and transmit the weekly timer setting.
 5. Press to turn the weekly timer ON. (**WEEKLY** lights.)
 6. Press again to turn the weekly timer OFF. (**WEEKLY** goes out.)

When the weekly timer is ON, the day of the week whose timer setting is complete, will light.

How the timer works

